

Rack Mount LCD Monitor

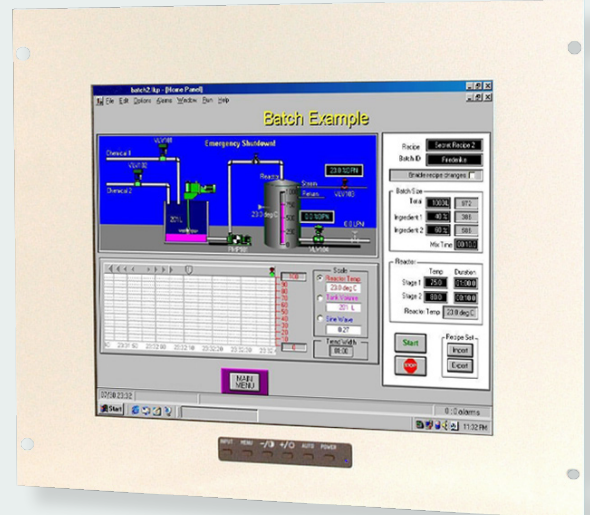
KME has developed a comprehensive range of Rack mountable LCD Monitors for Industrial applications. Our philosophy is quite simple – we use LCD monitor Heads (29LM series) from our existing flat-panel industrial monitor range and integrate them with metal panels to industry-standard dimensions.

Rack Mount Monitors have a full range of controls at the front and standard spaced holes for 19" rack mounting. As a general rule Rack mounted monitors are normally supplied finished in RAL 7035. We know that there will be occasions when this standard range is not exactly suited to all customer requirements – and we remain willing to customise colours or dimensions to market demands.

Features

- Standard 19" Equipment Rack Dimensions
- Painted in RAL 7035 (other colours available)
- Adjustment Controls at the front
- High grade Chrome handles available as option
- Toughened Non-Glare Safety Glass

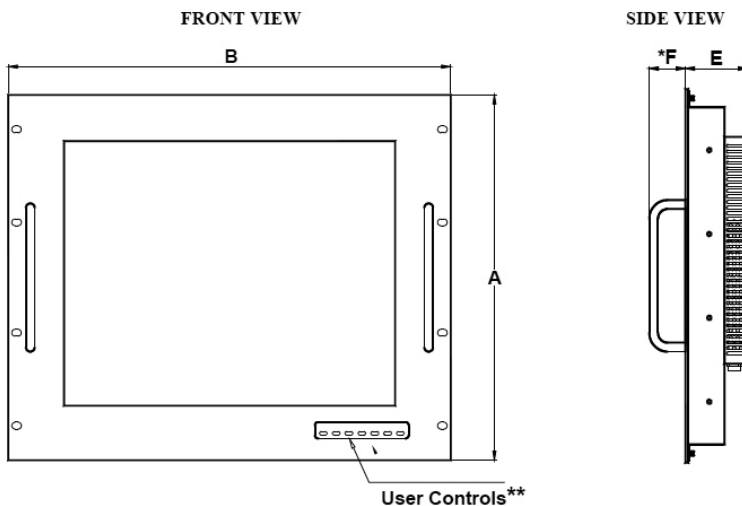
**15" LCD Rack Mount Monitor
29LR151A71UN-1**



Specifications: see next page

Specifications		
TFT Characteristics	Type Max. Resolution Active Display Area Contrast Ratio Brightness Viewing angles (at CR>10) Backlight life Nr. of colours Clock Rate	AM Colour TFT 1024 x 768 pixels 304 x 228 mm 450:1 typical 250 cd/m ² typical 130°H, 110°V 50,000 hrs typical 16M 112MHz max
Sync. Type/Level	Separate H&V (+/-ve) TTL	or Composite (-ve) TTL or Sync-on-Green (-ve) 0.3V
Signal Sync	Analog RGB 0.7-1.0Vp-p or TTL RGB >2.75Vp-p	
Synchronisation Range	Horizontal scan Vertical scan	15 to 60kHz 40 to 100Hz
Power supply	90 - 260VAC 50/60Hz	
Power consumption	35W (Max)	
Environmental	Storage temp. Operating temp.	-20°C to 60°C 0°C to 50°C
Dimensions	Monitor	see table below
	Weight	6.5 kg approx
Input	15D BNC x5, 9D	
Housing	Painted aluminium	
Colour	RAL7035 is stock colour – other colours available on request	
User controls	Front mounted	
On screen buttons	Brightness, Contrast, H/V Position & Size, Frequency, Frequency Fine	
Part numbers		
Model	29LR151A71UN/1	

Specifications are subject to change without notice.



Design Notes:

1. Rack Colour is normally RAL 7035.
2. Rack Metal Thickness is 3mm

* Handles fitted by request – not standard
 ** Controls on certain monitors are in the centre
 (Controls at the rear on 12" monitors)

(Not to Scale)

Dimensions (mm)	RACK MOUNT			
	12.1"	15.0"	17.0"	19.0"
A	266 (6U)	355 (8U)	399 (9U)	399 (9U)
B	483	483	483	483
E	58	63	N/A	69
F	40	40	N/A	40

• **Monitors**

- Desktop Monitors
- Large screen Monitors
- Custom-made Monitors
- 19" Rack Mount Monitors
- Rear Mount Monitors
- Monitors for Panel Mount
- Monitors for VESA Mount
- Kiosks
- Accessories

• **Monitors – Specific applications**

- Stainless Steel Monitors
- Car Displays
- Marine Monitors
- Military Monitors
- Replacement Monitors
- Train Monitors

• **Panel PC's**

- High Performance Systems
- Custom made Panel PC's
- Low Power Systems
- Extreme environments

• **Pointing devices**

- Accessories
- Touchpads
- Trackballs
- Trackball Modules
- Joysticks
- Custom made Pointing Devices

• **Keyboards**

- Desktop Keyboards with or without pointer
- Built-in Keyboards with or without pointer
- Cables & Connectors
- Custom made Keyboards



Mulder-Hardenberg, est. 1927, is the answer to professional demands in the domain of electronic related environments. We don't just sell products. We use our multidiscipline knowledge to provide the best possible solution, designed to your specific interest.

Contact details:

The Netherlands
 Mulder-Hardenberg B.V.
 Westerhoutpark 1a
 2012 JL Haarlem
 Tel.: +31 23 531 91 84
 info@mh-h.biz

Belgium, France, Luxemburg
 Mulder-Hardenberg N.V.
 Hoge Weg 129
 B-2940 Stabroek
 Belgium
 Tel.: +32 3 660 13 20
 info@mh-h.biz

Germany
 Mulder-Hardenberg GmbH
 Nordring 13
 D-65719 Hofheim/Ts
 Tel.: +49 6192 - 97 91 85
 info@mh-h.biz